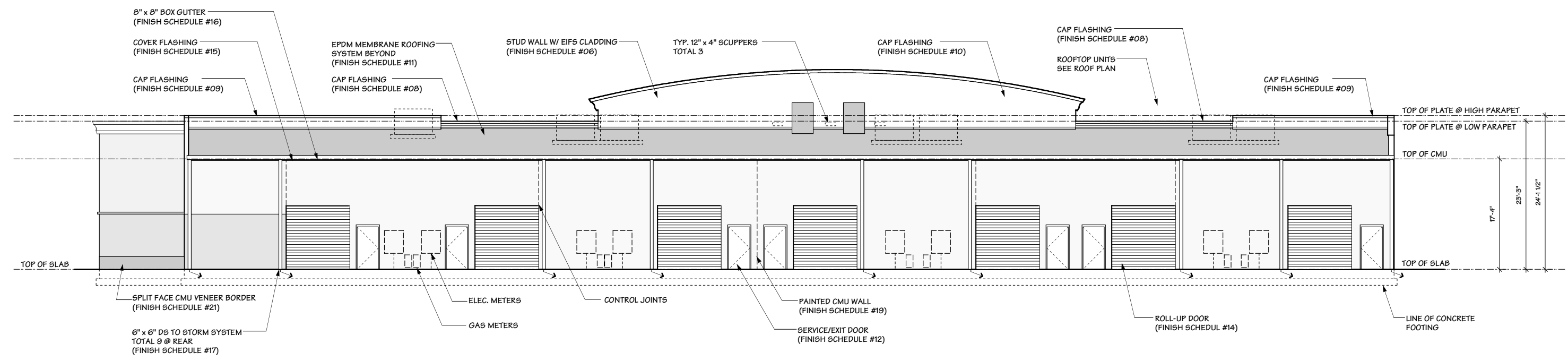


FRONT ELEVATION

1/8"=1'-0"



REAR ELEVATION

1/8"=1'-0"

SCHEDULE OF EXTERIOR MATERIALS & COLOURS					
NR.	LOCATION	MATERIAL / FINISH	COLOUR	MANUFACTURER*	REMARKS
1	SPLIT FACE CMU VENEER-BASE COLOUR	SPLIT FACE CMU	#032	BETCO BLOCK	
2	CMU SILL	CMU	#024	BETCO BLOCK	
3	EIFS @ PROJECTION	PAINTED	#300 SOUTHERN TAN	DRYVIT	
4	EIFS INLAY	PAINTED	#442 COTTON	DRYVIT	
5	EIFS ARCH	PAINTED	#442 COTTON	DRYVIT	
6	EIFS FIELD COLOUR	PAINTED	#107 SUNSETYELLOW	DRYVIT	
7	STOREFRONT FRAMING	PRE. ALUM.	SILVER	-	
8	CAP FLASHING W/ DETAIL MOULDING	PREFINISHED METAL	#442 COTTON	-	
9	CAP FLASHING	PREFINISHED METAL	#107 SUNSETYELLOW	-	
10	DETAIL MOULDING	PAINTED METAL	#442 COTTON	-	
11	MAIN ROOF	EPDM MEMBRANE ROOFING	-	-	
12	SERVICE/EXIT DOOR	PAINTED METAL	MATCH #107 SUNSETYELLOW	-	
13	AWNING	-	-	-	
14	ROLL-UP DOORS	PAINTED METAL	MATCH #107 SUNSETYELLOW	-	
15	COVER FLASHING	PREFINISHED METAL	MATCH #107 SUNSETYELLOW	-	
16	GUTTER	PREFINISHED METAL	WHITE	MBCI	
17	DOWN SPOUT	PREFINISHED METAL	WHITE	MBCI	
19	CMU @ REAR & LEFT WALL	PAINTED CMU	MATCH #107 SUNSETYELLOW	-	
20	CAP FLASHING @ LEFT CMU WALL	PAINTED METAL	MATCH #107 SUNSETYELLOW	-	
21	SPLIT FACE CMU VENEER-BORDER COLOUR	SPLIT FACE CMU	#024	BETCO BLOCK	4" SPLIT FACE - 6 COURSES HIGH
22	BOX SIGN W/ CHANGABLE FACE PLATES	-	-	-	LIT SIGN BOX BY SUGN COMPANY

1. Color of downspouts to match adjacent material.
 * OR EQUAL
 **painters to do samples on site to be approved prior to commencement of painting
 ***all mortar to match adjacent CMU U.N.O.

Forbes Retail Center
 BRUCE FORBES
 Evelyn Byrd
 Harrisonburg, Virginia

BUTZ WILBERN
 Architecture • Planning
 Interiors • Property Visioning

6718 Whittier Ave. # 120
 McLean, Virginia 22101
 703-356-6771 fax: 356-7010

© Butz-Wilbern Ltd. 2003

A-200